

It's Wood...and It's Acoustic

This unique system combines the sound absorbing properties of PET with the look and feel of wood to enable natural looking walls that deliver a high level of acoustic performance.

General Specifications

| | |
|-----------------|---|
| Material | 9mm black polyester + E0 MDF with veneer finish |
| Panel Lengths | 94.5", 102.4", 106.3" |
| Panel Width | 23.6" |
| Panel Thickness | 0.83" |
| Fire Rating | EN13501-1 B-s1,d0 |
| Acoustic Rating | NRC = 0.70 |
| Minimum Order | 15 pcs |



A Wide Selection of Finishes

Acoustic Wood Slat Panels are available in standard widths (23.6") with a choice of 3 lengths (94.5", 102.4", & 106.3").



Yellow Oak



Walnut



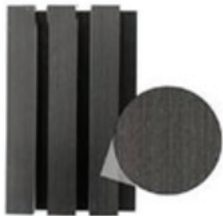
Rosewood



Ebony



Silver Oak



Iron Sword



Smoked Oak



Natural Black Oak

Acoustic Wood Slat Panels / WALLS



Order Codes

- ST-WOODSLATS-94.5-FINISH (L = 94.5") >> Example ST-WOODSLATS-94.5-ROSEWOOD
- ST-WOODSLATS-102.4-FINISH (L = 102.4") >> Example ST-WOODSLATS-102.4-YELLOW OAK
- ST-WOODSLATS-106.3-FINISH (L = 106.3") >> Example ST-WOODSLATS-106.3-IRON SWORD

An Alternative - Hexagons

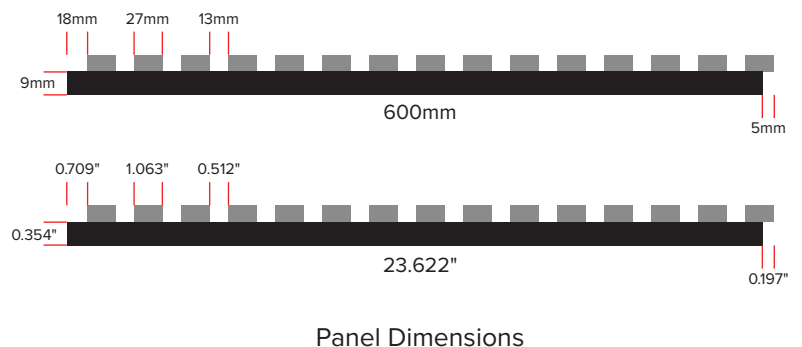
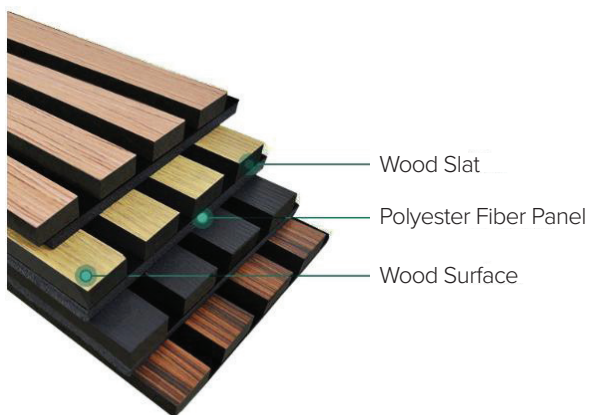
Create a unique wall pattern by incorporating hexagon-shaped panels.



| | |
|-----------------|---|
| Material | 9mm black polyester + E0 MDF with veneer finish |
| Panel Size | 9.3" x 9.1" x 0.83" |
| Fire Rating | EN13501-1 B-s1,d0 |
| Acoustic Rating | NRC = 0.70 |
| Minimum Order | 10 pcs |
| Order Code | ST-WOODHEX-FINISH |

What is an Acoustic Wood Slat Panel?

Panels combine the sound absorption properties of PET felt with the look and feel of wood.



Acoustic Wood Slat Panels / WALLS



Environmental

STATERA Acoustic Wood Slat Panels have an emission class rating = E0, the highest level, which indicates negligible formaldehyde emissions.

Warranty



5 Year warranty on materials.

Panel Installation

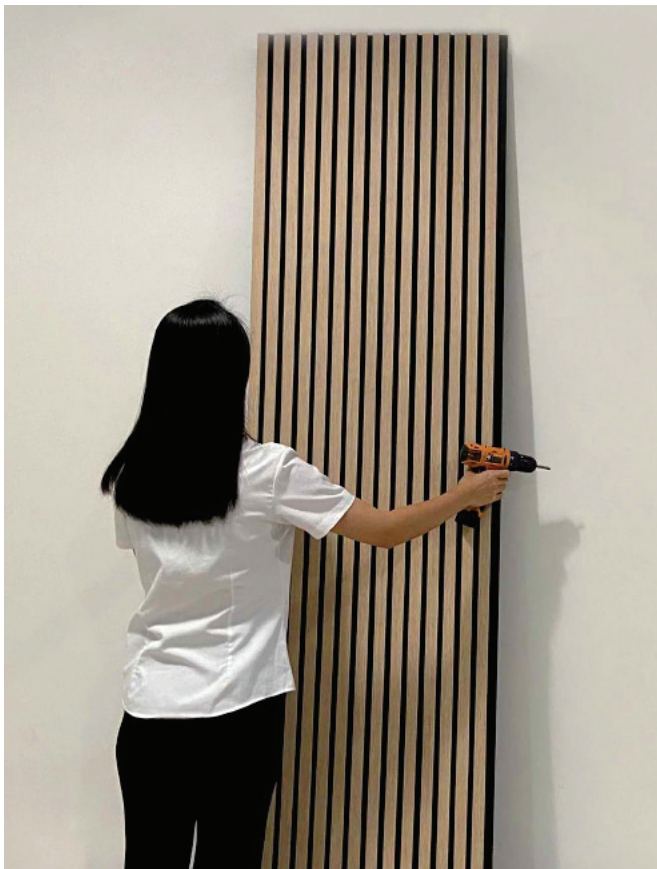
Two recommended installation methods that can be used for walls and ceilings are:

1. Direct Glue Method:

This method involves applying a layer of adhesive directly onto the wall or ceiling surface and then affixing the sound-absorbing or sound-insulating material to it. It's a simple and quick process that works well for both new constructions and retrofits.

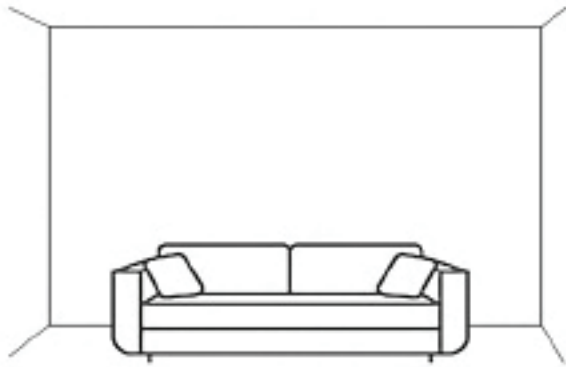
2. Mechanical Fastening Method:

This method uses mechanical fasteners such as screws, nails, or clips to secure the material to the wall or ceiling. It provides a more robust attachment and is particularly useful when dealing with heavier materials or when a higher level of security is required.



Acoustic Wood Slat Panels / WALLS

1. Direct Glue Method:



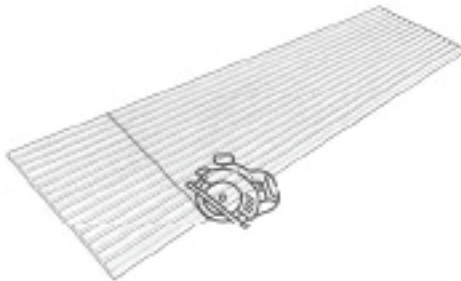
STEP 1

Select the Wall for Installation



STEP 2

Measure the wall and mark on the slat wood panel



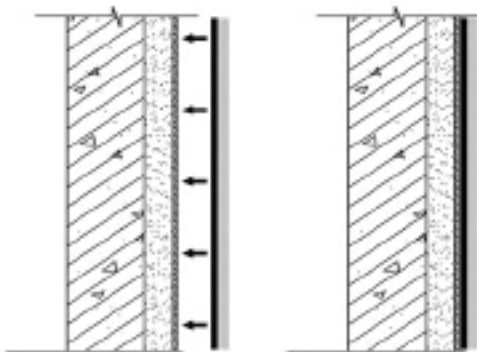
STEP 3

Cut the Slat wood panel



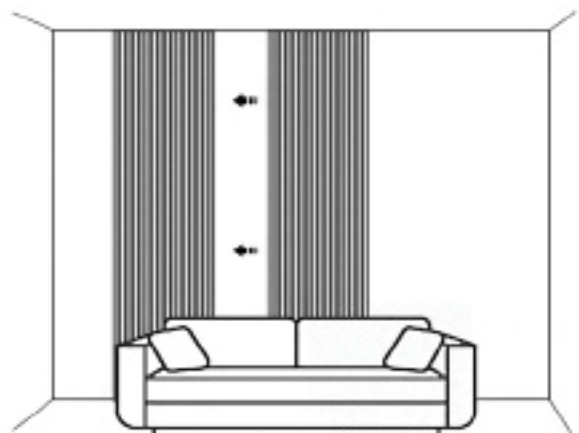
STEP 4

Apply glue evenly to the back of the slat wood panel



STEP 5

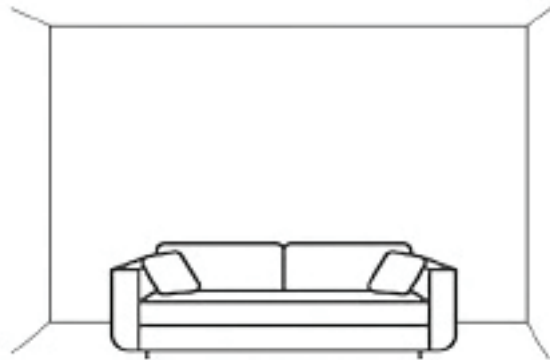
Attach the slat wood panel with the glue applied to the back to the wall



STEP 6

Sequentially join and paste the subsequent slats onto the wall

1. Mechanical Fastening Method:



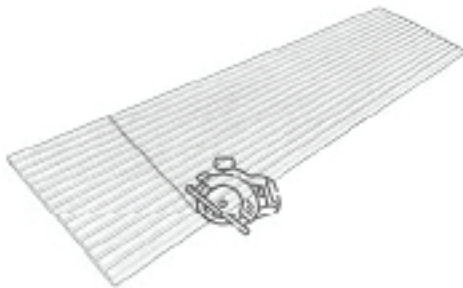
STEP 1

Select the Wall for Installation



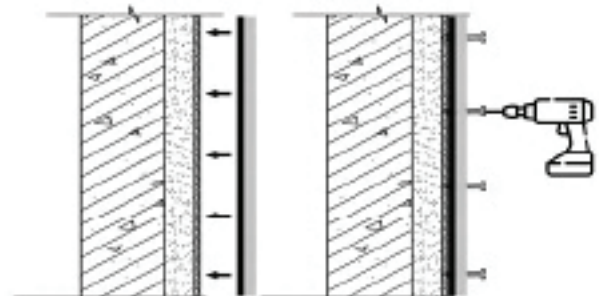
STEP 2

Measure the wall and mark on the slat wood panel



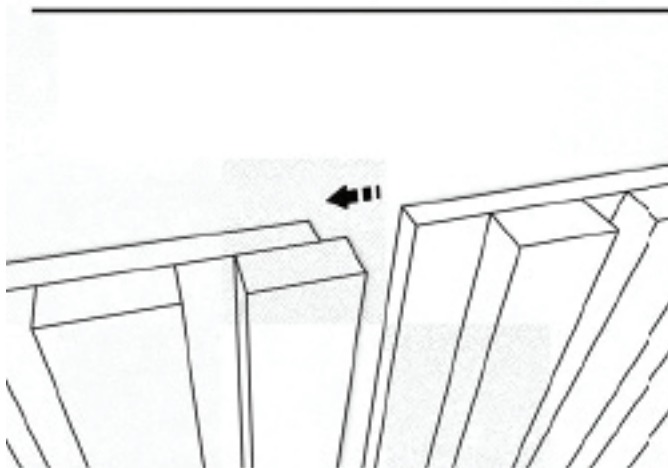
STEP 3

Cut the Slat wood panel



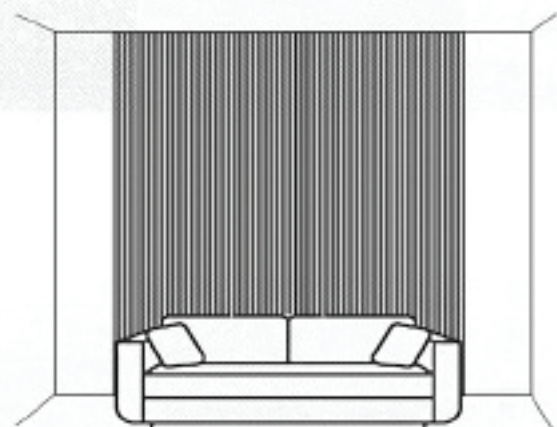
STEP 4

Affix the slats to the wall and fasten them with screws



STEP 5

Join the subsequent slats together and fix them to the wall



STEP 6

Complete your project and admire your work !